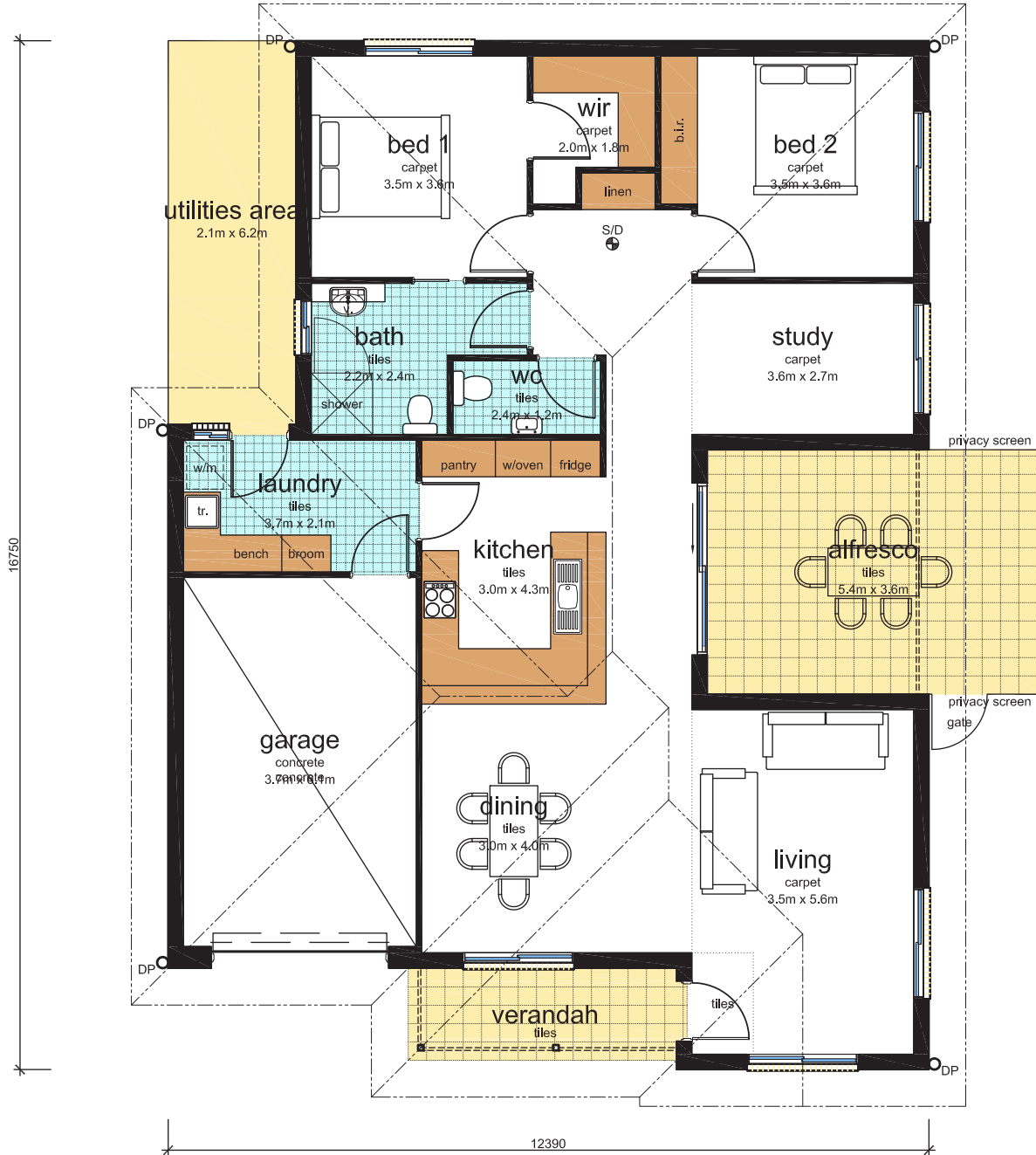


The Burnside Deluxe (Y2)

2 bedrooms + study, 1 bathroom, 2 WC, single garage



Features & Inclusions

- WIR in main bedroom
- 2 way bathroom
- Built in robes in bedroom 2
- 2 x WC
- Ducted reverse cycle air-conditioning
- Emergency monitoring system
- Remote controlled panel lift garage door
- Private outdoor alfresco courtyard
- Fencing, paving & landscaping

- Solar/electric hot water service
- Light fittings
- Ceramic cooktop

Optional Extras

- Ceiling fans
- Roller Shutters

Additional

- Window furnishings

AREA ANALYSIS	
Living Area	141.7 m ²
Garage Area	25.7 m ²
Verandah Area	6.7 m ²
Alfresco Area	19.9 m ²
Total Area	194.0 m ²